



MULTI-COUPLING

V5P



*V5P - C Dust Cap



*V5P - M - CG - D
Parking Station

TECHNICAL FEATURES AND OPTIONS

[CLICK HERE FOR 3D SECTION](#)



Interchange

Market



Mechanical Connection

Internal cams and locking pins



How to Disconnect

By rotating the lever after disengaging the locking system



Under Residual Pressure

Connectable with residual pressure in both



Available Threads

BSP NPT SAE Metrics



Valve Type

Flat Face



Operation Pressure

Up to 350 bar/5000 psi



Working Temperature

from -20 °C to +100 °C (from -4 °F to +212 °F).

MAIN APPLICATIONS



Large range of configuration options to fulfill various customer requests

Flat face design to reduce contamination of circuits

Connects under residual pressure

Mechanical connection eliminates brinelling effect

Safety lock prevents unwanted disconnection

Simple to use with a single movement applied by one arm only

Ease of maintenance and replacement of quick couplings

Cap and parking station are available

Possible to integrate hydraulic lines with pneumatic lines, water cooling or electrical connector in the same multiconnection

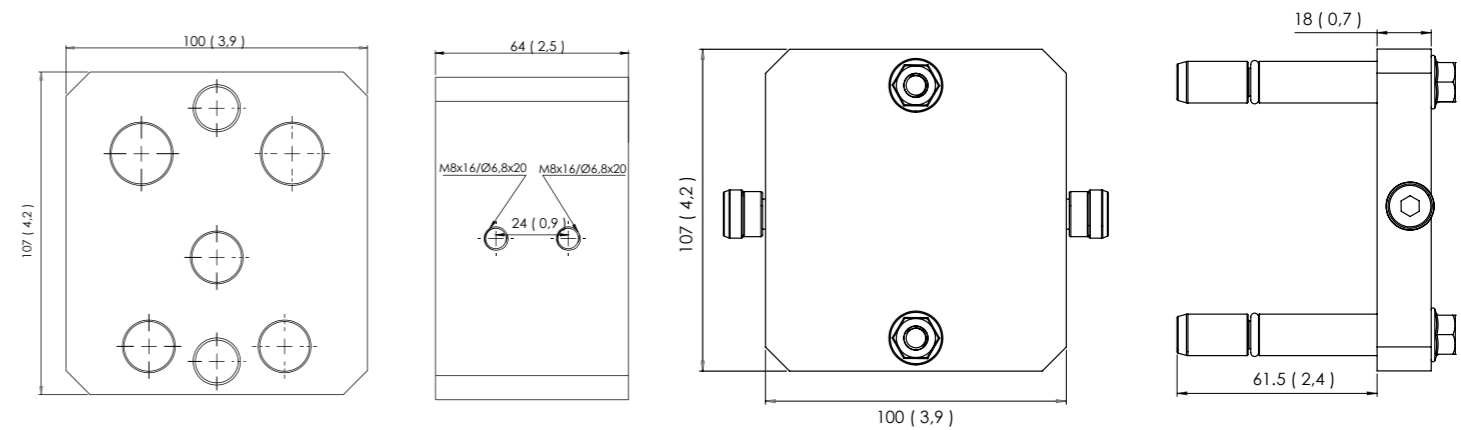
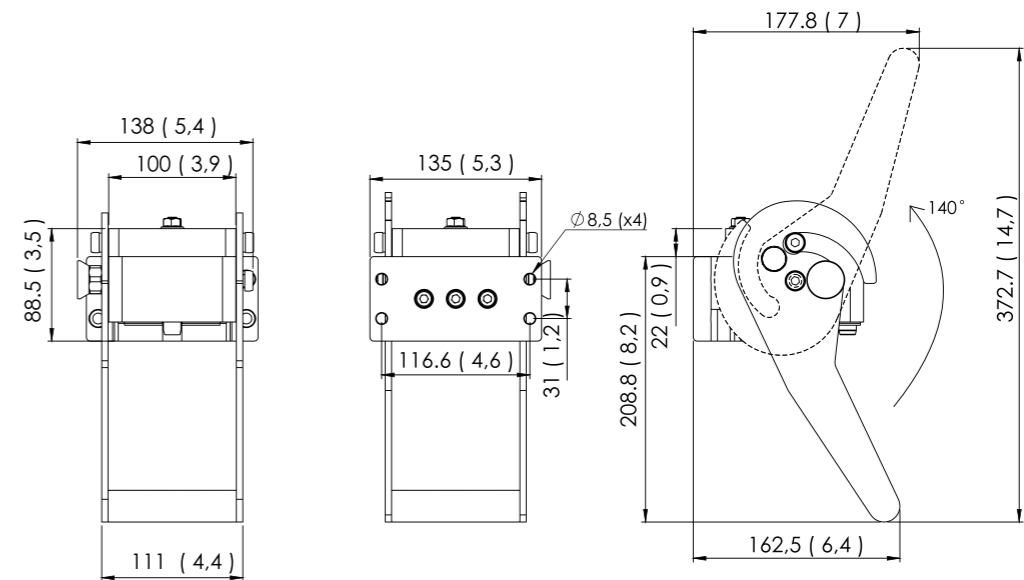
Minimizes time to change different attachments

Eliminates the risk of mismatching the hydraulic connections

Reduces the assembly space necessary for the hydraulic connections

Easy to mount on new equipment or retrofit on pre-existing system

Heater, sensor, indexator key or other devices can be integrated



BODY SIZE	DESCRIPTION	COUPLING GENDER	Port	THREAD SIZE(B)
6.3	V5P-F-C-UK	Female	3 x 6.3 Couplings	6.3 Couplings 9/16"-18 Unf
6.3&10	V5P-F-CG-UKUL	Female	3 x 6.3 Couplings & 2x10 Couplings	6.3 Couplings 9/16"-18 Unf & 10 Couplings 3/4"-16 Unf
10	V5P-F-G-DC	Female	2x10 Couplings	10 Couplings G1/2"
6.3	V5P-F-B-DA	Female	2x6.3 Couplings	6.3 Couplings G1/4"
6.3	V5P-F-B-UK	Female	2x6.3 Couplings	6.3 Couplings 9/16"-18 Unf
6.3&10	V5P-F-AG-UKUL	Female	1x6.3 Couplings & 2x10 Couplings	6.3 Couplings 9/16"-18 Unf & 10 Couplings 3/4"-16 Unf
6.3&10	V5P-F-BG-UKUL	Female	2x6.3 Couplings & 2x10 Couplings	6.3 Couplings 9/16"-18 Unf & 10 Couplings 3/4"-16 Unf
6.3&10	V5P-F-CG-DADC	Female	3 x 6.3 Couplings & 2x10 Couplings	6.3 Couplings G1/4" & 10 Couplings G1/2"
6.3	V5P-F-C-LS	Female	3 x 6.3 Couplings	6.3 Couplings M14x1.5(8L)
6.3&10	V5P-F-CG-LSDC	Female	3 x 6.3 Couplings v& 2x10 Couplings	6.3 Couplings M14x1.5(8L) & 10 Couplings G1/2"
6.3	V5P-M-B-UK	Male	2x6.3 Couplings	6.3 Couplings 9/16"-18 Unf
6.3	V5P-M-C-UK	Male	3x6.3 Couplings	6.3 Couplings 9/16"-18 Unf
6.3&10	V5P-M-BG-ULUK	Male	2x6.3 Couplings & 2x10 Couplings	6.3 Couplings 3/4"-16 Unf & 10 Couplings 9/16"-18 Unf
6.3&10	V5P-M-CG-ULUK	Male	3x6.3 Couplings & 2x10 Couplings	6.3 Couplings 9/16"-18 Unf & 10 Couplings 3/4"-16 Unf
6.3&10	V5P-M-CG-DADB	Male	3x6.3 Couplings & 2x10 Couplings	6.3 Couplings G1/4" & 10 Couplings G1/2"

WARNING

A defect, wrong choice or an improper use of product, can cause injury to persons, animals and objects.

Never connect or disconnect under dynamic pressure (E.g. pump on).

Do not expose the female coupling to high impulse pressure when disconnected.

Do not connect or disconnect with flow and/or pressure in the circuit.

Do not connect or disconnect when the temperature inside the circuit is higher than 80 °C (176 °F).

Check the maximum allowable operating pressure of the port in use.

Make sure that the medium used is compatible with the seal and the material of the product, as indicated for each series.

In case of doubt, please contact Oleocon Technical Support Service.

It is mandatory to read and follow the instructions.

Last updated version of the Instructions apply at time of installation. Make sure to check the latest Instructions on Oleocon website (oleocon.com.tr) before selecting or using Oleocon products.